

# County Connector

---

Sam Naumann, AARP Maine

Clara McCool, Maine Broadband Coalition

# Quick Intro

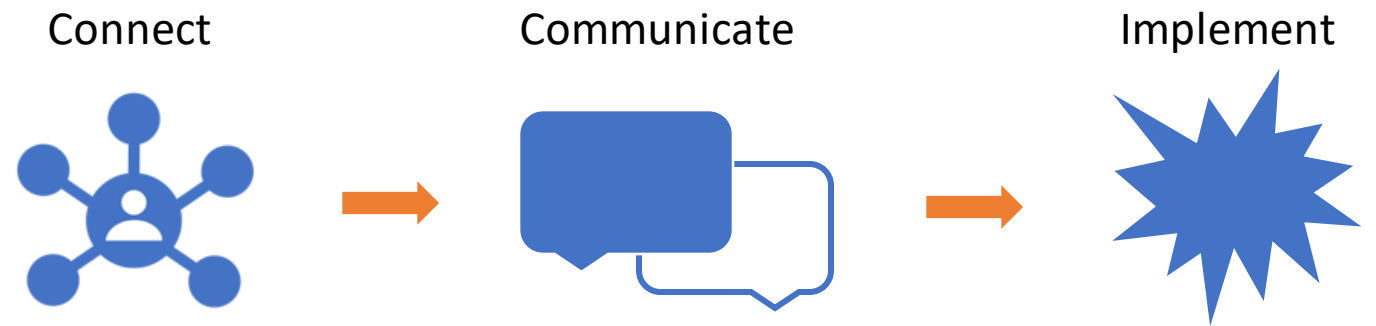
---

- Join at: [Slido.com #588629](https://www.slido.com/join/588629)



# Who is a County Connector?

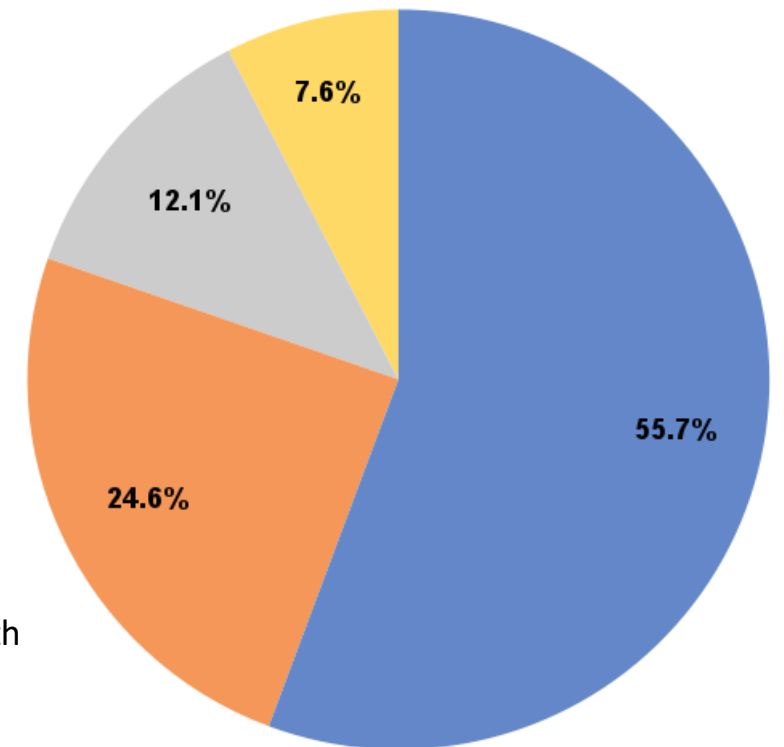
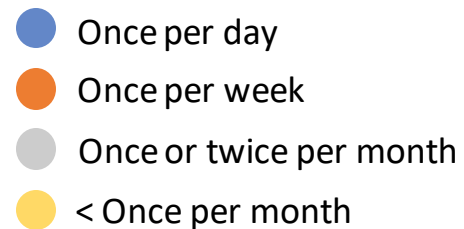
- Builds networks
- Understands collaboration
- Believes in internet for all



# What will a County Connector do?


- **Amplify** the benefits of broadband
- **Support** local efforts
- **Organize** broadband events
- **Lead** grassroots efforts
- **Collaborate** with other County Connectors
- **Gather** stories

Waldo County  
Internet Interruptions





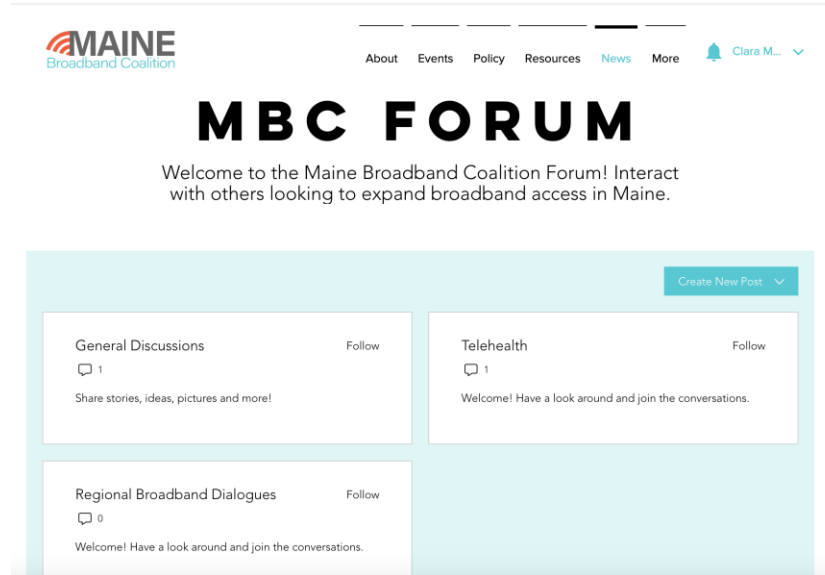
# Our Goals:

- **Create** local relationships
  - **Collaborate** across regions
  - **Construct** a broadband plan
- 

# Next Steps

---

- **Open Office Hour with Sam:** Next Monday, December 13th @ 3pm
- Island Institute's *Let's Talk Broadband*, Friday December 10th @ 11:00am
- What you can do:
  1. Get towns to sign onto guiding values document
  2. Join the MBC Forum – introduce yourself!
  3. Connect with existing broadband leaders in your county
  4. Spread the word about the County Connector program



# Connecting Online: The Maine Broadband Coalition Forum

---

# Why is broadband a priority?

## Employment/economic opportunity

- Researching/applying to jobs
- Working remotely

## Education/learning

- Homework gap
- Remote learning

## Healthcare

- Aging in place
- Telehealth

## Social ties and civic engagement

- Registering to vote
- Attending public meetings





# Broadband Basics

---

- **High-speed broadband** is a standard: speeds greater than **25 mbps download, 3 mbps upload**
  - Evolving definition
  - Maine's standard: 100/100, unserved is below 50/10
- Why is it so hard in Maine?
  - **Broadband is place based infrastructure**

# Broadband Infrastructure

## Mobile Broadband

High-speed internet designed for use on-the-go with seamless connectivity from one location to another.

## Fixed Wireless

Broadband service provided between towers and customers using radio waves. Primarily found in rural areas.

## Satellite

Broadband service provided by satellites orbiting the earth. Satellite service can be impacted by line-of-sight and latency.

## Cable

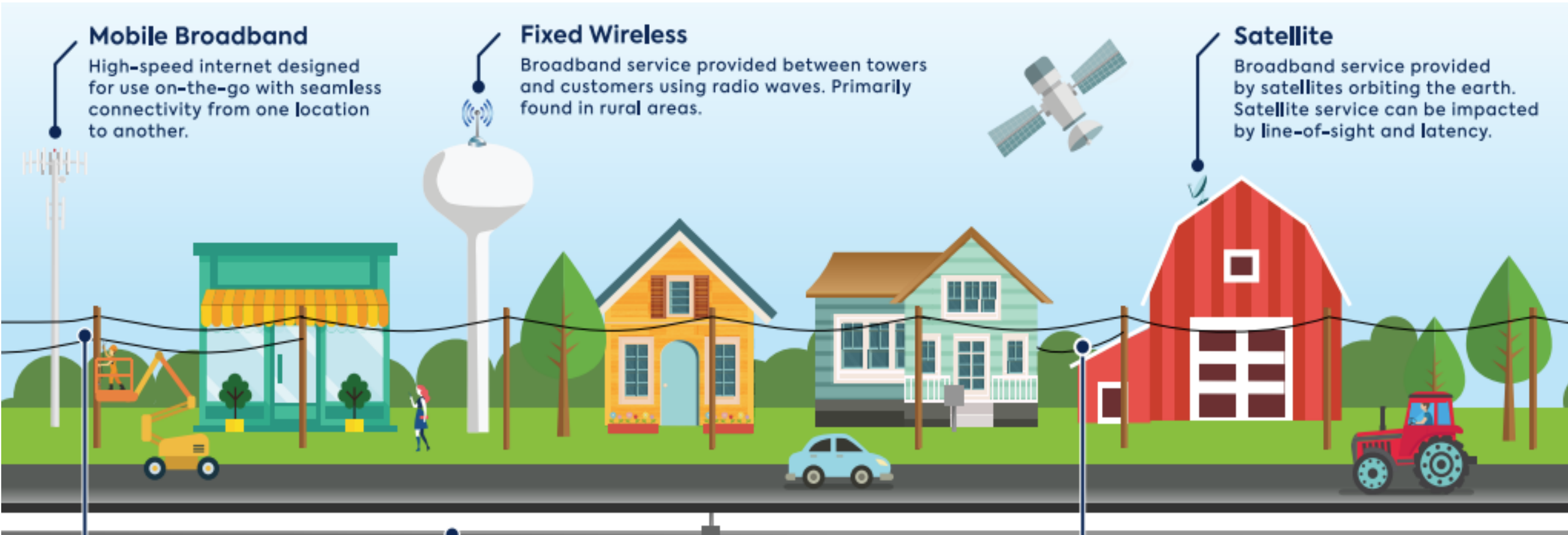
Internet provided by a cable television company over a mixed coaxial and fiber-optic network.

## Fiber

Fiber-optic service uses transparent glass fibers to carry data across distances. Some customers can receive fiber connections directly to their home, but fiber is also used to transport data from communities to the broader internet.

## DSL

Digital-subscriber line (DSL) is broadband delivered over a mixed network of fiber and traditional copper phone lines.





# 3 A's of Broadband

## **Availability**

Is there existing broadband infrastructure?

## **Affordability**

Can residents afford the monthly subscription rate?

## **Accessibility**

Are there digital inclusion measures in place to ensure that people have the devices and digital literacy to use broadband internet?



# Ownership Models

- Internet Service Provider (ISP) owned & operated
- Municipally owned, ISP operated
  - Isleboro, Maine
- Municipally owned & operated
  - Chattanooga, Tennessee
- Regional utility
  - Downeast Broadband Utility (*Open Access*)

# Community Driven Broadband Model

---



# Federal Broadband Funding

---

- American Rescue Plan Act (ARPA)
  - Local Fiscal Recovery Funds
    - **\$260.7 million** spread across **Maine counties**
    - **\$237 million** spread across **Maine towns/cities**
  - Capital Projects Fund
    - **\$128 million** for broadband expansion
  - Unallocated ARP Funds through Maine Jobs Recovery Program
    - **\$21 million** to Achieve Universally Available Broadband
- Infrastructure Investment and Jobs Act
  - At least **\$100 million** for broadband

---

**= \$746.7 million potential broadband funds**

**Collaboration** is key to  
taking advantage of federal  
funds

# State Broadband Funding

---

**CONNECTMAINE**

**Connect Maine Authority**

Planning Grants

Infrastructure Grants



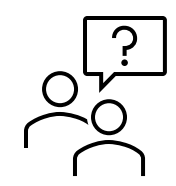
**Maine Connectivity Authority**

New state entity



**Maine Community Foundation**

Community Broadband Grants



What are your  
questions?

---



# Next Steps

---

- **Open Office Hour with Sam:** Next Monday, December 13th @ 3pm
- Island Institute's *Let's Talk Broadband*, Friday December 10th @ 11:00am
- What you can do:
  1. Get towns to sign onto guiding values document
  2. Join the MBC Forum – introduce yourself!
  3. Connect with existing broadband leaders in your county
  4. Spread the word about the County Connector program